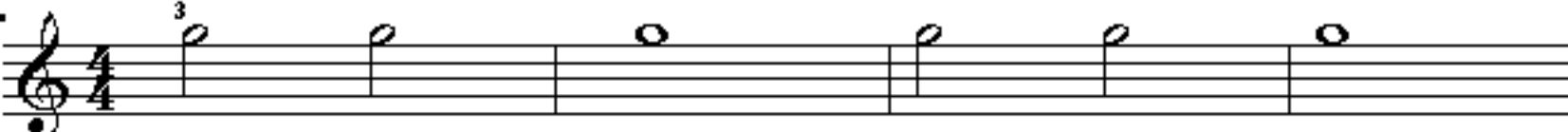


Блокфлейта АЛТ

Начальные упражнения.

1.



Цифры около нот - это номера отверстий, которые нужно закрывать пальцами.




2.



3.



4.



5.



Гамма До-мажор

3



Лёгкие пьесы.

1. ЁЛОЧКА



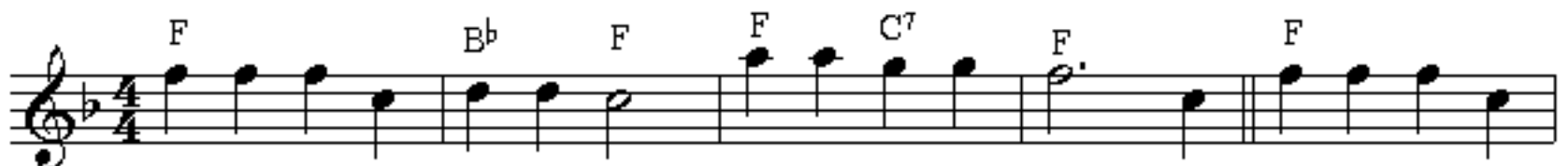
2. МАЛЕНЬКАЯ ТОЛЬКА



3. INSY, WINSY, SPIDER



4. OLD MACDONALD HAD



5. HAPPY BIRTHDAY TO YOU

Musical notation for "Happy Birthday to You" in F major, 3/4 time. The melody is written on two staves. The first staff contains the first two measures, and the second staff contains the next six measures. Chords are indicated above the notes: F, C7, F, F, F7, Bb, F, C7, F.

6. DOWN IN DEMERARA

Musical notation for "Down in Demerara" in F major, 4/4 time. The melody is written on three staves. The first staff contains the first two measures, the second staff contains the next two measures, and the third staff contains the final two measures. Chords are indicated above the notes: F, C7, F, C7, F.

7. CHILDREN'S SONG

Musical notation for "Children's Song" in D major, 2/4 time. The melody is written on two staves. The first staff contains the first four measures, and the second staff contains the next four measures. Chords are indicated above the notes: D, G, D, G, D, A7, D, D, G, D, A7, D.

8. CLEMENTINE

Musical notation for "Clementine" in F major, 3/4 time. The melody is written on two staves. The first staff contains the first four measures, and the second staff contains the next four measures. Chords are indicated above the notes: F, C, C7, F, C, C7, F.

9. СВЕТИТ МЕСЯЦ

5

Musical score for 'СВЕТИТ МЕСЯЦ' in 4/4 time, key of B-flat major. The score consists of four staves of music. The first staff begins with a treble clef and a key signature of one flat. The melody is written in a simple, rhythmic style. Chords are indicated above the notes: F, C, F, C, G, C, F, C, G, C. The piece concludes with a double bar line.

10. ПЕРЕПЁЛОЧКА

Musical score for 'ПЕРЕПЁЛОЧКА' in 2/4 time, key of B-flat major. The score consists of two staves of music. The first staff begins with a treble clef and a key signature of one flat. The melody is written in a simple, rhythmic style. Chords are indicated above the notes: Gm, Cm, D7, Gm, Cm, Bb7, D7, Gm. The piece concludes with a double bar line.

11. МЫ ИДЁМ ПО УРУГВАЮ

Musical score for 'МЫ ИДЁМ ПО УРУГВАЮ' in 4/4 time, key of B-flat major. The score consists of two staves of music. The first staff begins with a treble clef and a key signature of one flat. The melody is written in a simple, rhythmic style. Chords are indicated above the notes: Dm, A7, A7, Dm. The piece concludes with a double bar line.

12. ВО ПОЛЕ БЕРЁЗА СТОЯЛА

Musical score for 'ВО ПОЛЕ БЕРЁЗА СТОЯЛА' in 2/4 time, key of B-flat major. The score consists of two staves of music. The first staff begins with a treble clef and a key signature of one flat. The melody is written in a simple, rhythmic style. Chords are indicated above the notes: Dm, F, G, Bb, A7, Dm, Dm, F, G, Bb, A7, Dm, A7, G, Bb, A7, Dm. The piece concludes with a double bar line.

13. ПО ДОНУ ГУЛЯЕТ

Musical score for "13. ПО ДОНУ ГУЛЯЕТ" in G major, 3/4 time. The score consists of two staves. The first staff contains the first six measures, and the second staff contains the remaining six measures. Chord symbols are placed above the notes: G, D7, G, C, G, D7, G, D7, G.

14. ПОЛЬКА

Musical score for "14. ПОЛЬКА" in D minor, 2/4 time. The score consists of two staves. The first staff contains the first six measures, and the second staff contains the remaining six measures. Chord symbols are placed above the notes: Dm, Gm, A7, Dm, Dm, Gm, A7, Dm.

15. АВГУСТИН

Musical score for "15. АВГУСТИН" in C major, 3/4 time. The score consists of three staves. The first staff contains the first six measures, the second staff contains the next six measures, and the third staff contains the final six measures. Chord symbols are placed above the notes: C, G, C, G7, C, G7, C, G7, C, G7, C.

16. МОЙ КОСТЁР

Musical score for "16. МОЙ КОСТЁР" in D minor, 3/8 time. The score consists of two staves. The first staff contains the first six measures, and the second staff contains the remaining six measures. Chord symbols are placed above the notes: Dm, Gm6, A7, Dm, Dm, D7, Dm, A7, Dm.